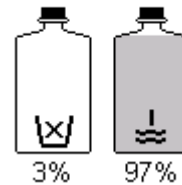
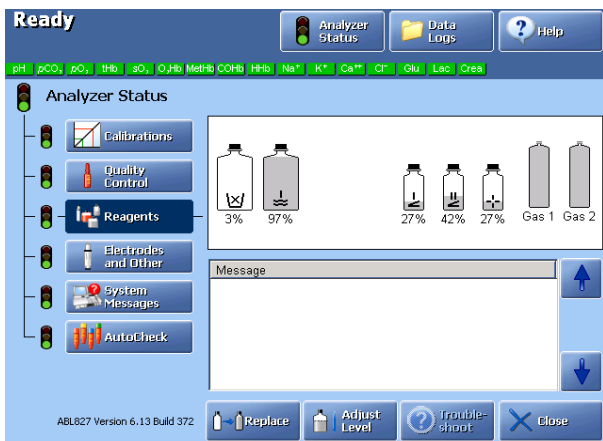
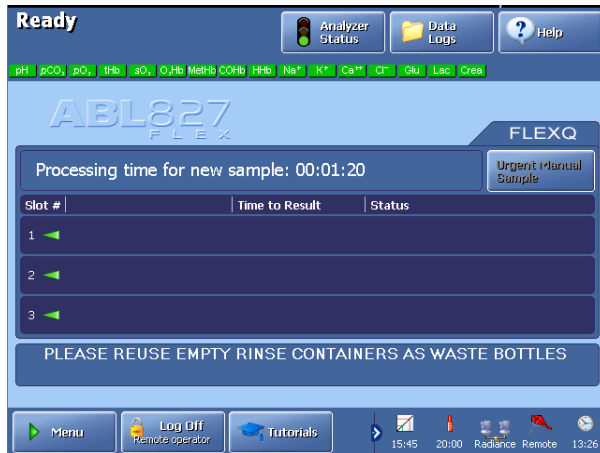


## Monitoring the volume status of rinse and waste

1. Select **Analyzer Status** on the top of the screen
2. Select **Reagents** on the left hand side of the screen to view status of Rinse and Waste containers.



WASTE      RINSE

A percentage indicates the on board fluid status

**WASTE container should be no more than 85-90% full prior to replacement**

**RINSE should be replaced when less that 10% full**